

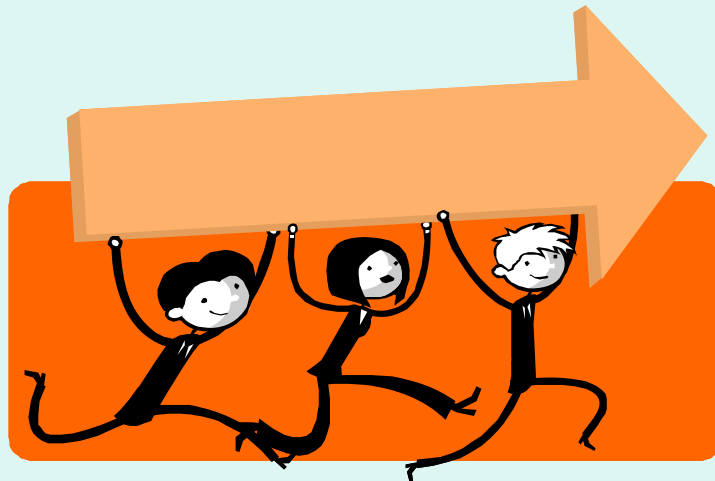
The Target

- A Strategic Highway Safety Plan which:
 - Describes the problem areas
 - Outlines major solution strategies
 - Specifies actions to be implemented
 - Targets and measures success



What we've already done

- Initial data analysis
- Identified YOU as partners at the December 2005 kickoff meeting and follow-up meetings
- Selected 7 Critical Emphasis Areas



My summer vacation...

- In Depth Crash Data analysis for Critical Emphasis Areas by VCJR
 - Insight into crash mechanisms to help target solutions
 - Roadway, Time of Day, Driver Age, Vehicle Type, etc.
- Task Teams for each Critical Emphasis Area
 - Selected Strategies
 - Developed Work plans (general)
 - Drafted Action plans (specifics for implementation)



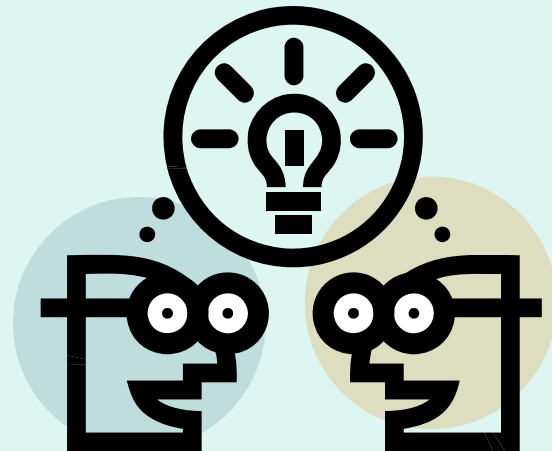
Currently

- Core group is pulling together the 7 task teams' efforts into a single document
- Safety Partners review draft
- Rewrite, rewrite, rewrite



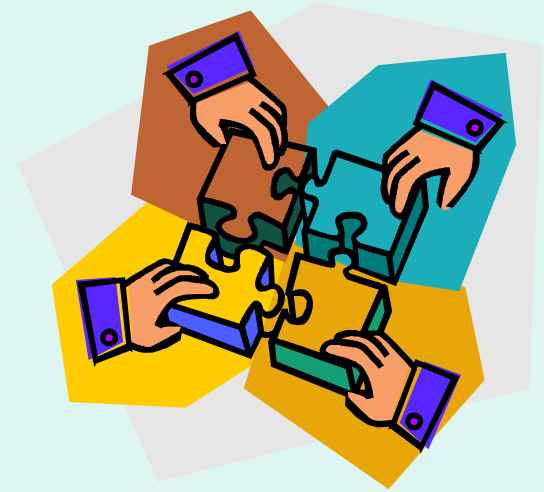
Next Steps

Getting from talking about it to
actually doing something



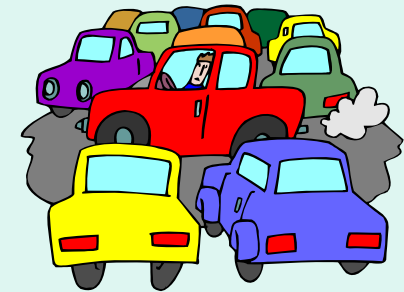
Timeline

- September/October
 - SHSP document finalized
 - Executive Committee sign-off
 - Governor's endorsement
 - FHWA approval
- October/November
 - Start Implementation!
 - Form cross organizational teams where needed
 - Get website up and running



Timeline (cont.)

- 2007
 - Implementation continues
 - Interim review of performance measures (every 4-6 months)
- Fall 2007
 - Review and update SHSP
 - The SHSP is a LIVING DOCUMENT
 - Collaboration and Implementation is ONGOING



Crashes

aren't

~~Accidents~~